

Introduction

Thank you for your purchase of the new SPEC5 **XR** Active Loudspeakers!
We do hope you enjoy it!



Please keep this user manual handy and carefully follow all safety and operational instructions. We do hope you enjoy it!

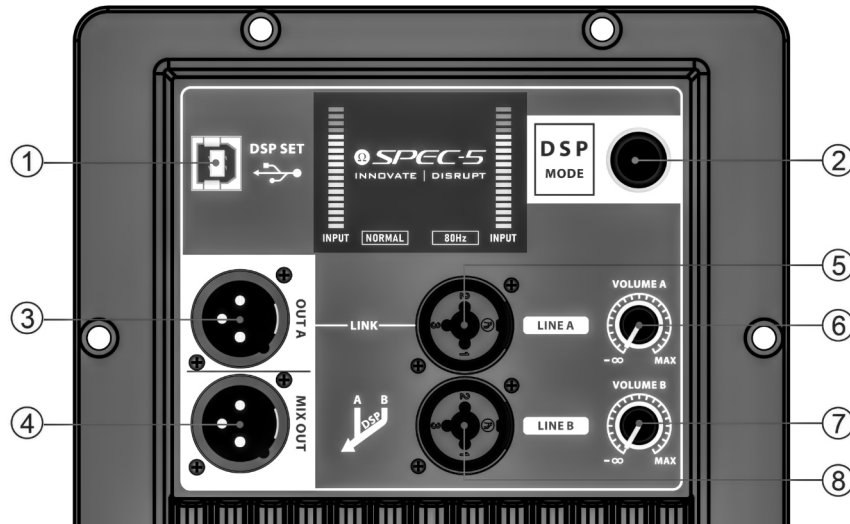
Features

The **XR** Active Loudspeakers feature an all-digital active processor with user-accessible control screen, Class-D amplifier with large aluminum heatsink and custom designed, rugged transducers for excellent performance, clarity and reliability.

Overview



Amplifier Panel



• **1. LCD Screen & DSP Set**

This screen displays input signal level and DSP settings. When signal is coming in normally, the input bars will bounce nicely in the green. Keep input signals below the yellow and red indicators for the most reliable operation.

• **2. DSP Control Knob / Master GAIN KNOB**

Adjust Main gain level from -infinity to +10dB. For best performance and reliability, keep Master gain **below 0dB**. Push the knob to enter settings. Turn this knob to adjust settings in menu. Push "Exit" option to go back.

• **3. Output A - THRU XLR connection from Line A**

This THRU (Parallel link) output is identical to Line A input. It is useful for daisy-chaining multiple Active Loudspeakers or Subwoofers.

• **4. Mix Out**

This output is mixes Line A and Line B inputs. It is useful for combining stereo signals to a single Active Loudspeaker.

• **5. Line A - XLR Female & 1/4" Female Combination Jack**

Connect your Line-level source equipment to this input. The socket supports both XLR Male and 1/4" Male connectors.

A common configuration is to run all source equipment into your Full-Range Active Loudspeaker (such as the XR-15) and then run the Line-out from that speaker to the Line-A input of the XR-SUB.

• **4. Line A - Volume control knob**

Adjust volume knob to set signal level. Please keep signal levels bouncing nicely in the green and never ever touching the red lights.

• **7. Line B - XLR Female and 1/4" Combo Jack**

Connect your Line-level source equipment to this input. This second input is useful for handling discrete Left channel and Right channel cable pairs.

• **8. Line B - Volume control knob**

Adjust volume knob to set signal level. Please keep signal levels bouncing nicely in the green and never ever touching the red lights.

• **9. AC Mains connector (Power-Con)**

Please consult an electrician or authorized service provider for this cable. This connector must not be connected or disconnected under live load.

Note the AC requirements for this unit and ensure your electrical system can deliver this amount of power and amperage. Be especially cognizant of extension cords which may not be rated for this power draw or amperage.

• **Warning: Excessively boosting Volume or Equalization settings will cause DAMAGE to the Loudspeaker. Keep Master gain to below 0dB in most instances. Do not over-drive signal.**

Specifications

Specification	XR-SUB
Description	Active Subwoofer with DSP, Class-D Amplifier
Power Rating	5000 Watts Peak (1400 Watts RMS)
Woofer	18" Subwoofer 8-ohm (Model: 18X2000-8)
Woofer Details	4" Inside/Out Voice coil with 125 Oz ferrite magnet
Frequency Response	29Hz to 150Hz (+/-10dB) (DSP-tuned)
Maximum SPL	136dB Maximum SPL
DSP	Equalization, Master Gain, Input Level display
Line Inputs	Two (2) Balanced XLR Line Inputs
Input Connectors	Combo socket supports both 3-pin XLR and 1/4" jacks
Outputs	Balanced XLR Line-level Mix Out and Ch1 Thru-Out
Cabinet Type	Wooden with Textured finish
Mounting	Support for Pole-Mounted Active Loudspeakers
Portability	Dual Easy-Grip Handles on either sides
Weight	45 kg (about 99 pounds)
Size	635 mm x 715 mm x 525 mm
Voltage	AC 100V-240V 60Hz/50Hz (Global)

- **Warning: This unit is capable of extremely loud sound. Please exercise responsible and safe use in all settings.**
- **Please follow all standard precautions for this electrical device. Do not allow unit to get wet. Do not use if power cord is damaged. Please refer all servicing to a qualified technician.**